



**smARTE3BY FLEX**  
SOLUTIONS DIGITAL

SMARTE STOCK & SPARE PART MANAGEMENT

TELECOMMUNICATIONS INDUSTRY

"REAL-TIME OPERATIONAL EXCELLENCE"

# FLEX SMARTER SOLUTIONS

## FLAWLESS EXECUTION THROUGH DIGITAL MASTERY

We will help you to maximise your organisation's Return on operational Assets (RooA). This means that we enable you to operate your assets as effectively and efficiently as possible, while also ensuring they are healthy and safe. In this way, you reduce your operational costs and risks, becoming far more profitable as a result.

We can achieve this through one or more of our six "smARTE solutions" that have been built using a combination of our leading-edge, digital technologies and are focused around our "Real-Time Operational Excellence (RTE)" mantra.



$$\frac{\text{Operating Income}}{\text{Average Operating Assets}} = \text{RETURN ON OPERATING ASSETS} \uparrow$$



# SMARTER STOCK

## OPTIMAL STOCK & SPARE PART MANAGEMENT

### **Optimal Stock & Spare Part Management is critical to the Telecommunications Industry**

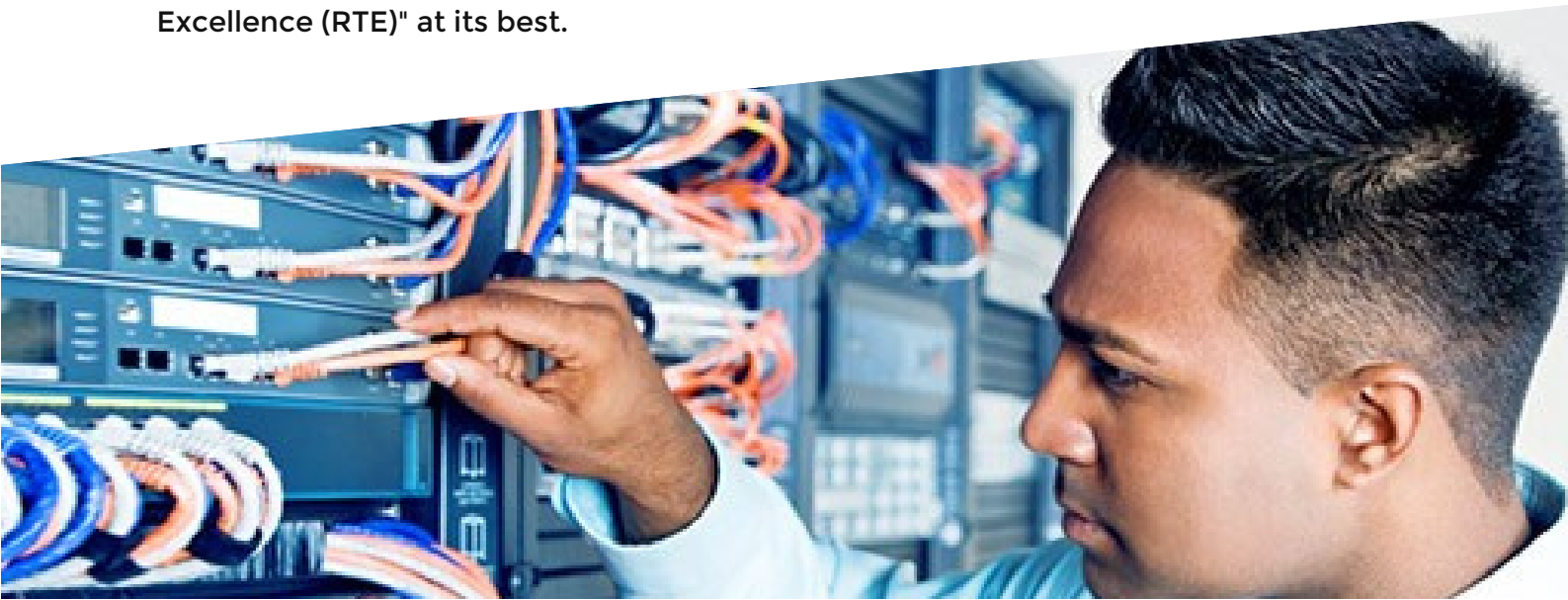
If we consider how many people rely on the internet and web tools to run their lives and businesses, we can understand that the telecommunications industry requires a reliable uptime of 99.99% or “four nines”.

There is also the massive drive for Telecommunications Service Providers to constantly expand their network footprint to areas with poor or no network coverage and to switch to fibre optic networks.

Access to new equipment for network expansion, customer premise equipment (CPE), spare parts, consumables etc. when and where technical teams and 3rd party vendors need it, therefore, becomes critical. This can only be achieved if Telecommunication Service Providers can implement a system that can help them to achieve 99% stock accuracy and a stock track & trace solution that can feed real-time information into the organisation's Enterprise Resource Planning (ERP) system.

### **Our Solution:**

FLEX digital is the market leader in employing the latest RFID technologies to assist your Telecommunications organisation to achieve optimal stock & spare part management. This includes identifying the most appropriate RFID labels, choosing the optimal hardware infrastructure model, and finally deploying the most suitable software architecture for your organisation. It's all about providing the correct output (dashboards, reports, and alerts) to the right person just in time. It's "Real-Time Excellence (RTE)" at its best.





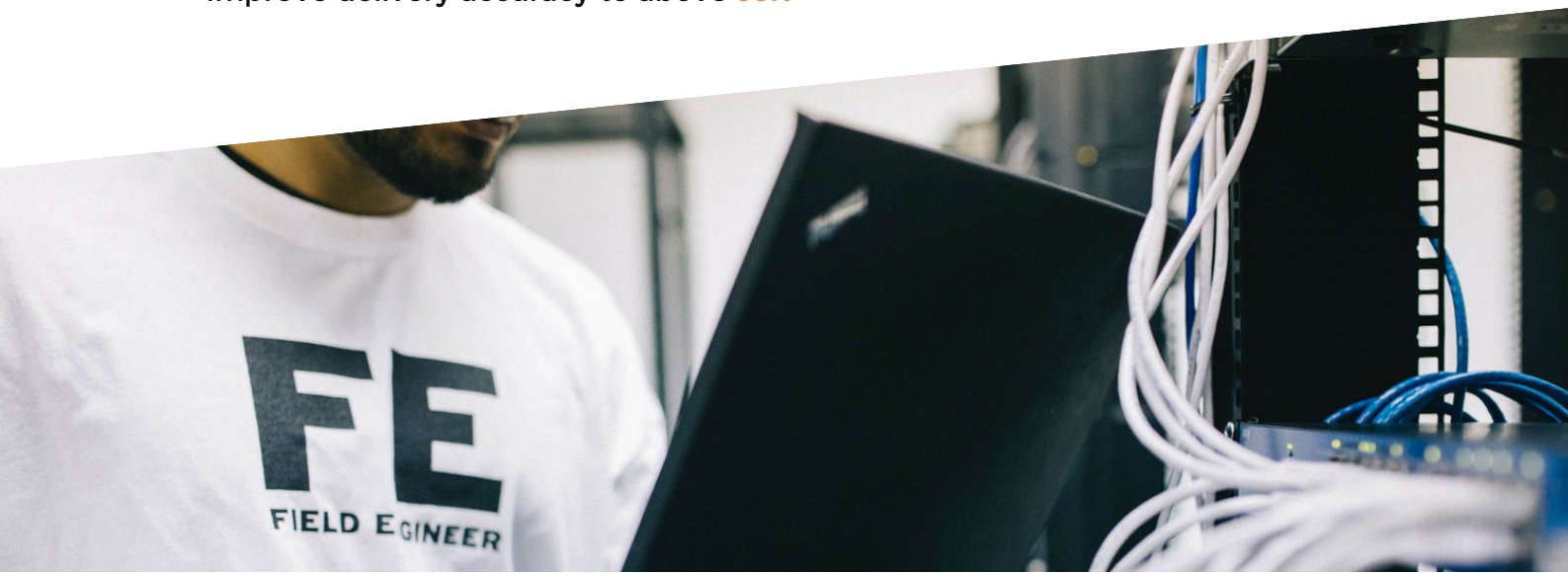
# SMARTER STOCK

## THE SMARTER SOLUTION:



## THE OPERATIONAL BENEFITS:

- Improved stock-on-hand accuracy to **99%**
- Reduce receiving and dispatch times by **80%**
- Reduce time taken to locate items by **80%**
- Reduce dispatch errors by **90%**
- Reduce variance resolution time by **90%**
- Improve delivery accuracy to above **95%**





# SMARTER STOCK

## THE POSITIVE FINANCIAL IMPACT OF RFID:

- Reduce stock management labour costs by as much as **84%**
- Reduced stock holding by up to **55%**
- Reduced shrinkage costs by up to **48%**
- Improve order fulfilment by **56%**
- Free up working capital by **24%**

**ROI < 1 YEAR!**

**INCREASE ROOA  
BY 10% OR MORE**

**CONTACT US TO FIND OUT MORE!**



**Website:** [www.flexdigitalsolutions.com](http://www.flexdigitalsolutions.com)

**Email:** [info@flexdigitalsolutions.com](mailto:info@flexdigitalsolutions.com)

**Phone:** +27 (0)10 023 9044

